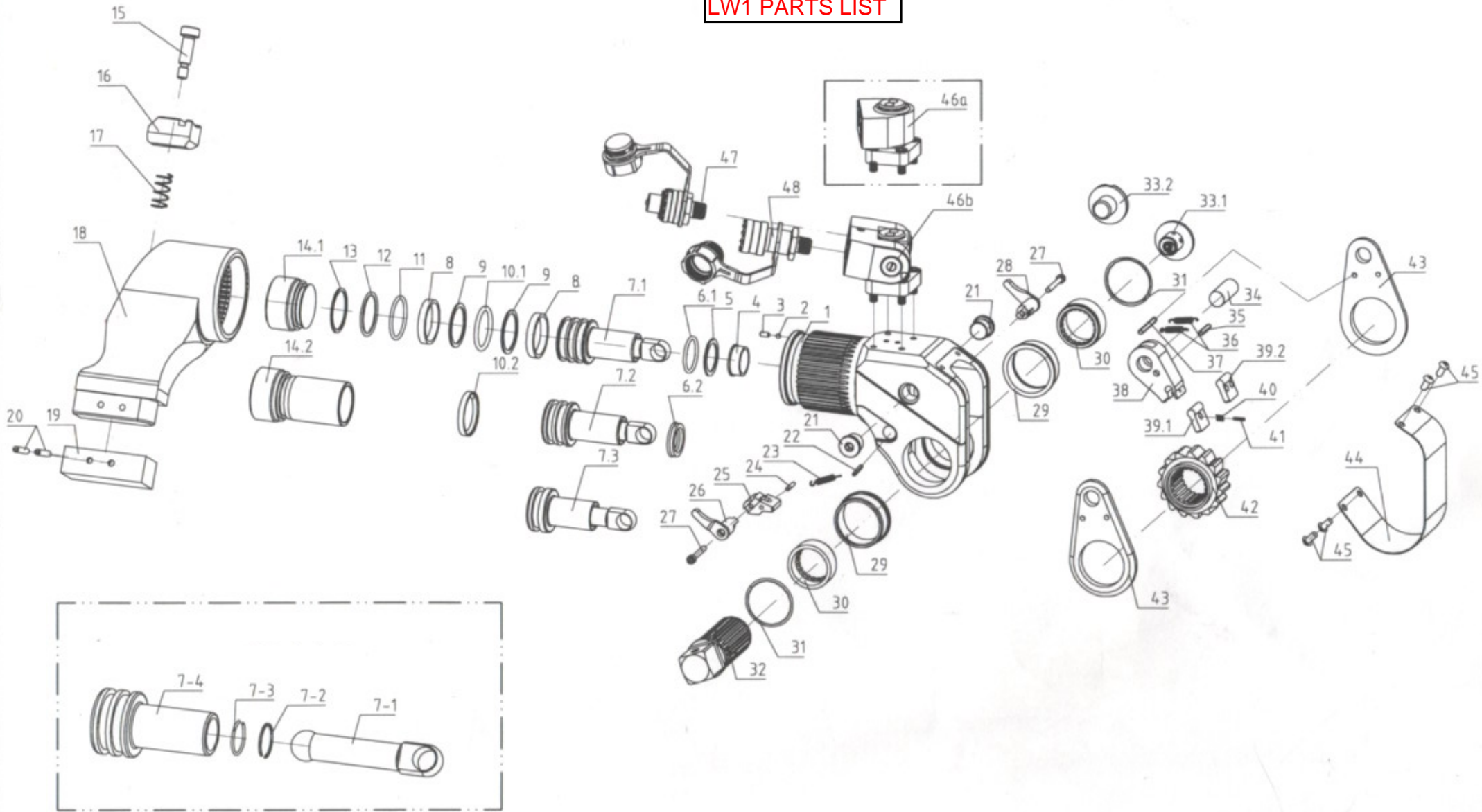


LW1 PARTS LIST



LW1 PARTS LIST

ITEM	BOLTTECH PART NUMBER	NAME	ASSEMBLY	QTY.
1	LW1-01	Body	HOUSING	1
3	M3*6GB77/GB80	Screw	ASSEMBLY	1
5	23.5×19×1.2	Retaining Ring		1
6.2	N90/AS568-116	O-Ring		1
7.3	LW1-02	Piston Rod Assembly	PISTON ROD ASSEMBLY	1
7-1	1BTUS.02-02	Piston connected rod		1
7-2	TWS17N.02-03	retaining clip		1
7-3	M14*GB895.1	steel retaining ring		1
7-4	1BTUS.02A-01	piston rod		1
8	1BTUS.02A-03	wearable ring4.1*1.5*86		
9	28*23.5*1.2	Retaining Ring		1
10.1	N90/AS568-119	O-Ring		1
12	N90/AS568-119	O-Ring		1
13	28*23.5*1.2	Retaining Ring		1
14.1	LW1-03	End Cap		1
15	M6.5 *20 ISO7379	Screw	REACTION ARM ASSEMBLY	1
16	LW1-04	Reaction Arm fixer		1
17	1BTUS.03.04	Compressed Spring		1
18	LW1-05	Reaction Arm		1
19	LW1-06	Reaction Arm Cover		1
20	M5*24GB879	Pin		1
21	LW1-07	plug for housing		2
22	M2*14GB879	Pin for reaction pawl		1
23	1MXTA-21	Tension Spring		1
24	M2*14GB879	Pin for reaction pawl		1
25	LW1-08	Reaction Pawl		1
26	LW1-09	Button Lever(Left)		1
27	M3*20GB70.1	Release lever Screw		2
28	LW1-10	Button Lever(Rigth)		1
29	LW1-11	Drive Bushing		2
30	LW1-12	Drive Sleeve Spline		2
31	DNH-30	retaining Circlip		2
32	LW1-13	3/4" Square Drive		1
33.1	LW1-14	Drive Retainer		1
34	LW1-15	Rod End Pin		1
35	M3*14GB879	Pin for drive pawl	PAWL ASSEMBLY	1
36	1MXTA-20	spring for drive pawl-tension		2
37	M3*24GB879	Pin for drive plate		1
38	LW1-16	Drive Pawl Primary		1
39.2	LW1-17	Drive Pawl Secondary		1
40	1MXTA-22	Compressed Spring		2
42	LW1-18	Ratchet Spline		1
43	LW1-19	Drive Plate		2
44	LW1-20	Shroud		1
45	M4*6GB70.2	Screw		4
46a	JX5	Swivel Assembly		1