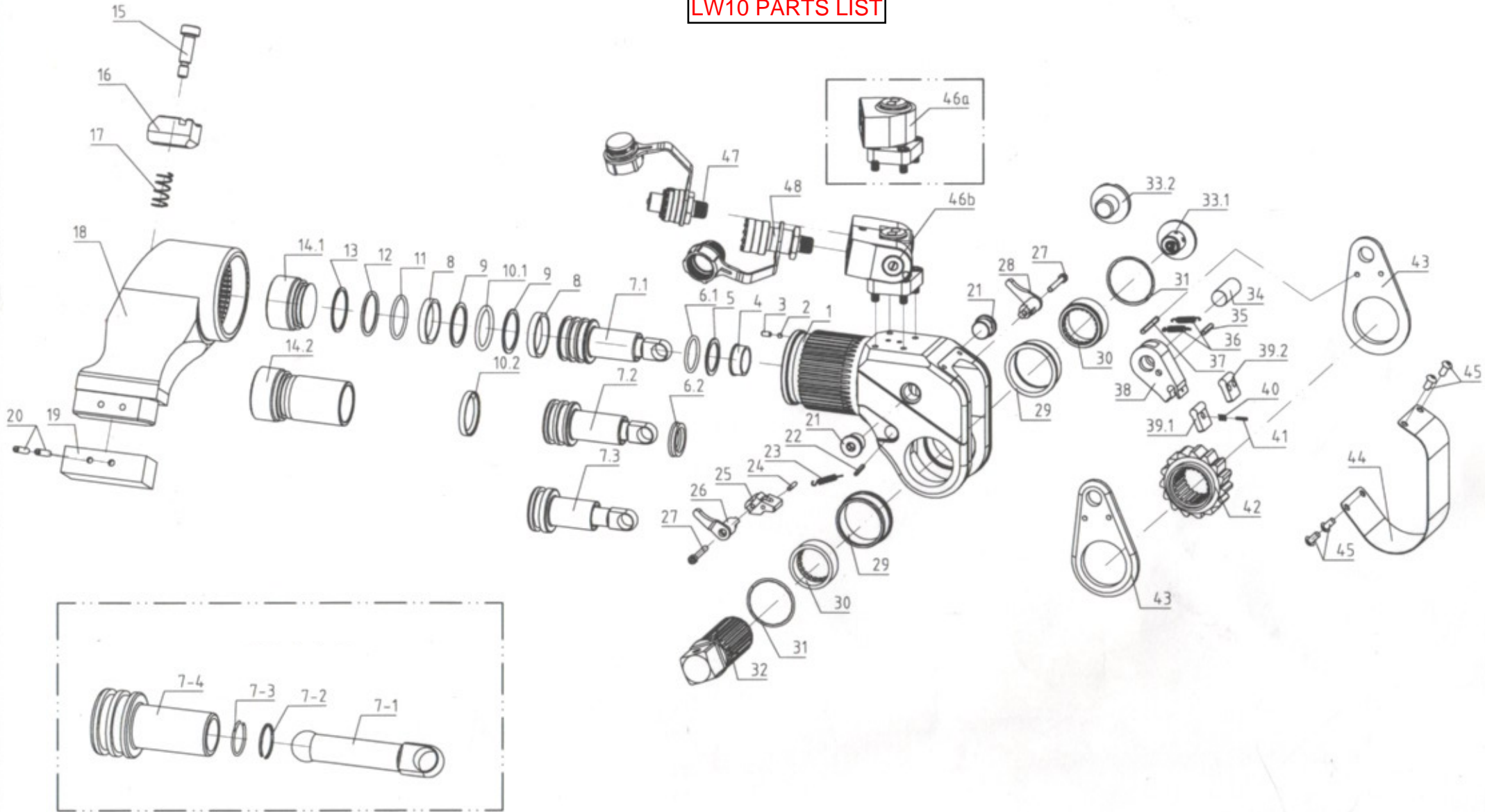


LW10 PARTS LIST



LW10 PARTS LIST

ITEM	BOLTTECH PART NUMBER	NAME	ASSEMBLY	QTY.
1	LW10-01	Body	HOUSING ASSEMBLY	1
2	M4*6GB70.2	steel ball		1
3	M5*8GB77/GB80	Screw		1
6.2	38*48*6PU UN38	U-Ring		1
7.3	LW10-02	Piston Rod Assembly	PISTON ROD ASSEMBLY	1
7-1	10BTUS.02-02	Piston connected rod		1
7-2	10BTUS.02-03	retaining clip		1
7-3	10BTUS.02-04	steel retaining ring		1
7-4	10BTUS.02A-01	piston rod		1
8	10BTUS.02A-05	wearable ring9.5*2.5*189		1
9	60*50*1.6	Retaining Ring		1
10.1	5.7*49.6 N90/P50A	O-Ring		1
12	3.1*54.4 N90/G55	O-Ring		1
13	60*55*1.6	Retaining Ring		1
14.1	LW10-03	End Cap		1
15	M10*25 ISO7379	Screw	REACTION ARM ASSEMBLY	1
16	LW10-04	Reaction Arm fixer		1
17	3BTUS.03.04	Compressed Spring		1
18	LW10-05	Reaction Arm		1
19	LW10-06	Reaction Arm Cover		1
20	M8*50GB879	Pin		2
21	LW10-07	Screw 2		
22	M4*26GB879	Pin		1
23	20MXTA-20	Tension Spring		1
24	M4*26GB879	Pin		1
25	LW10-08	Reaction Pawl		1
26	LW10-09	Button Lever(Left)		1
27	M5*40GB70.1	Screw 2		
28	LW10-10	Button Lever(Rigth)		1
29	LW10-11	Drive Bushing		2
30	LW10-12	Drive Sleeve Spline		2
31	DNH-58	Circlip		2
32	LW10-13	Square Drive		1
33.1	LW10-14	Drive Retainer		1
34	LW10-15	Rod End Pin		1
35	M5*30GB879	Pin	PAWL ASSEMBLY	1
36	10MXTA-20	Tension Spring		2
37	M5*50GB879	Pin		1
38	LW10-16	Drive Pawl Primary		1
39.2	LW10-17	Drive Pawl Secondary		1
40	10MXTA-22	Compressed Spring		1
41	M3*20GB879	Pin		1
42	LW10-18	Ratchet Spline		1
43	LW10-19	Drive Plate		2
44	LW10-20	Shroud		1
45	M5*80GB70.2	Screw		4
46a	JX5	Swivel Assembly		1