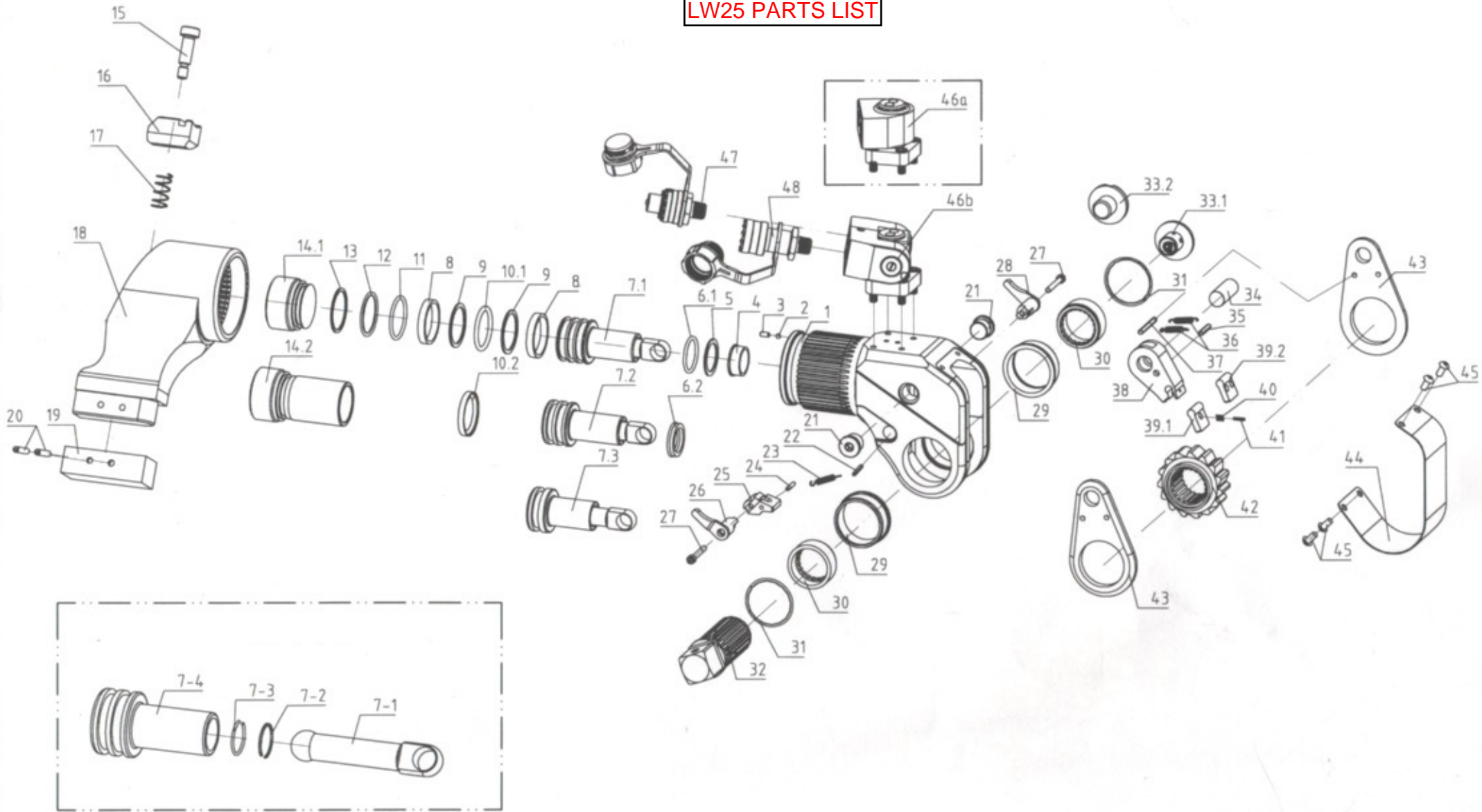


# LW25 PARTS LIST



## LW25 PARTS LIST

ITEM	BOLTTECH PART NUMBER	NAME	ASSEMBLY	QTY.
1	LW25-01	Body	HOUSING ASSEMBLY	1
2	M5	steel ball		
3	M6*6GB77/GN80	Screw		1
6	56*66*6PU UHS56	Retaining Ring		1
7.2	LW25-02	Piston Rod Assembly	PISTON ROD ASSEMBLY	1
7-1	25BTUS.02-02	Piston connected rod		1
7-2	TWS370N.02-03	retaining clip		1
7-3	TWS370N.02-04	steel retaining ring		1
7-4	25BTUS.02A-01	piston rod		1
8	25BTUS.02A-03	wearable ring6.1*2.5*236		2
10.2	76.2*65.2*4.2	O-Ring		1
12	3.1*69.4 N90/G70	O-Ring		1
13	76.2*71*1.6	Retaining Ring		1
14.1	LW25-03	End Cap		1
15	M10*25 ISO7379	Screw	REACTION ARM ASSEMBLY	1
16	LW25-04	Reaction Arm fixer		1
17	3BTUS.03.04	Compressed Spring		1
18	LW25-05	Reaction Arm		1
19	LW25-06	Reaction Arm Cover		1
20	M8*60GB879	Pin		2
21	LW25-07	Screw 1		
22	M5*24GB879	Pin		1
23	35MXTA-20	Tension Spring		1
24	M5*40GB879	Pin		1
25	LW25-08	Reaction Pawl		1
26	LW25-09	Button Lever(Left)		1
27	M6*50GB70.1	Screw 2		
28	LW25-10	Button Lever(Rigth)		1
29	LW25-11	Drive Bushing		2
30	LW25-12	Drive Sleeve Spline		2
31	DNH-80	Circlip		2
32	LW25-13	Square Drive		1
33.1	LW25-14	Drive Retainer		1
34	LW25-15	Rod End Pin		1
35	M5*40GB879	Pin	PAWL ASSEMBLY	1
36	25MXTA-20	Tension Spring		2
37	M5*65GB879	Pin		1
38	LW25-16	Drive Pawl Primary		1
39.2	LW25-17	Drive Pawl Secondary		1
40	25MXTA-22	Compressed Spring		2
41	M3*28GB879	Pin		1
42	LW25-18	Ratchet Spline		1
43	LW25-19	Drive Plate		2
44	LW25-20	Shroud		1
45	M5*8GB70.2	Screw		4
46a	JX3	Swivel Assembly		1