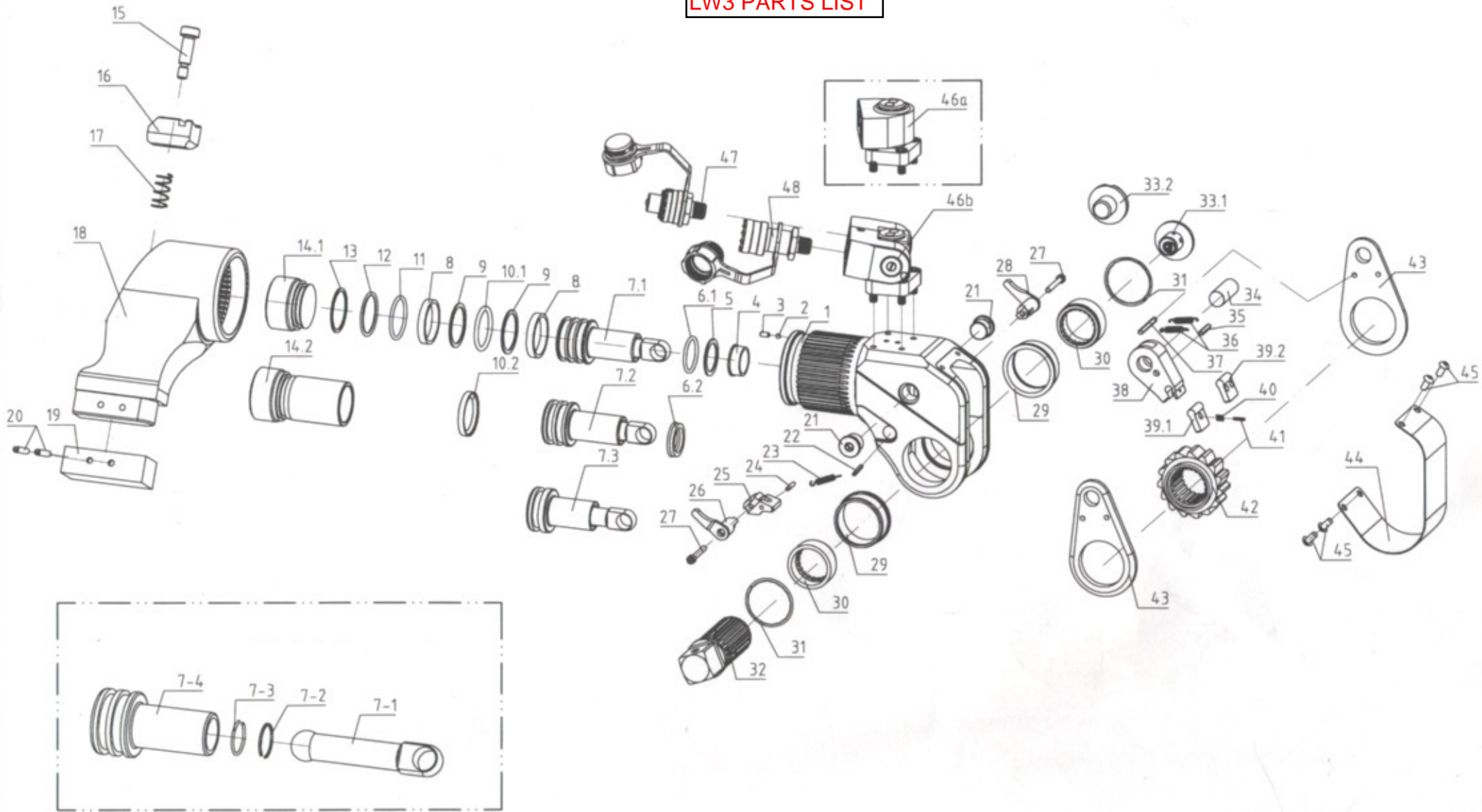


LW3 PARTS LIST



LW3 PARTS LIST

ITEM	BOLTTECH PART NUMBER	NAME	ASSEMBLY	QTY.
1	LW3-01	Body	HOUSING ASSEMBLY	1
3	M4*12GB77/GB80	Screw		1
6.2	25*32*4PU	O-Ring		1
7.3	LW3-02	Piston Rod Assembly	PISTON ROD ASSEMBLY	1
7-1	3BTUS.02-02	Piston connected rod		1
7-2	3BTUS.02-03	Retaining clip		1
7-3	3BTUS.02-04	Steel retaining ring		1
7-4	3BTUS.02A-01	Piston rod		1
8	3BTUS.02A-05	Wearable ring6.1*2.5*117		1
9	38*32*1.2	Retaining Ring		1
10.1	3.5*31.7 N90/P32	O-Ring		1
12	N70/AS568-125	O-Ring		1
13	38*33.5*1.2	Retaining Ring		1
14.1	LW3-03	End Cap		1
15	M10*25 ISO7379	Screw	REACTION ARM ASSEMBLY	1
16	LW3-04	Reaction Arm fixer		1
17	3BTUS.03.04	Compressed Spring		1
18	LW3-05	Reaction Arm		1
19	LW3-06	Reaction Arm Cover		1
20	M5*30GB879	Pin		1
21	LW3-07	Screw 2		
22	M3*16GB119	Pin		1
23	3MXTA-21	Tension Spring		1
24	M3*20GB879	Pin		1
25	LW3-08	Reaction Pawl		1
26	LW3-09	Button Lever(Left)		1
27	M4*30GB70.1	Screw 2		
28	LW3-10	Button Lever(Rigth)		1
29	LW3-11	Drive Bushing		2
30	LW3-12	Drive Sleeve Spline		2
31	DNH-40	Circlip		2
32	LW3-13	Square Drive		1
33.1	LW3-14	Drive Retainer		1
34	LW3-15	Rod End Pin	PAWL ASSEMBLY	1
35	M4*20GB879	Pin		1
36	3MXTA-20	Tension Spring		2
37	M3*35GB879	Pin		1
38	LW3-16	Drive Pawl Primary		1
39.2	LW3-17	Drive Pawl Secondary		1
40	3MXTA-22	Compressed Spring		2
42	LW3-18	Ratchet Spline		1
43	LW3-19	Drive Plate		2
44	LW3-20	Shroud		1
45	M5*8GB70.2	Screw		4
46a	JX3	Swivel Assembly		1