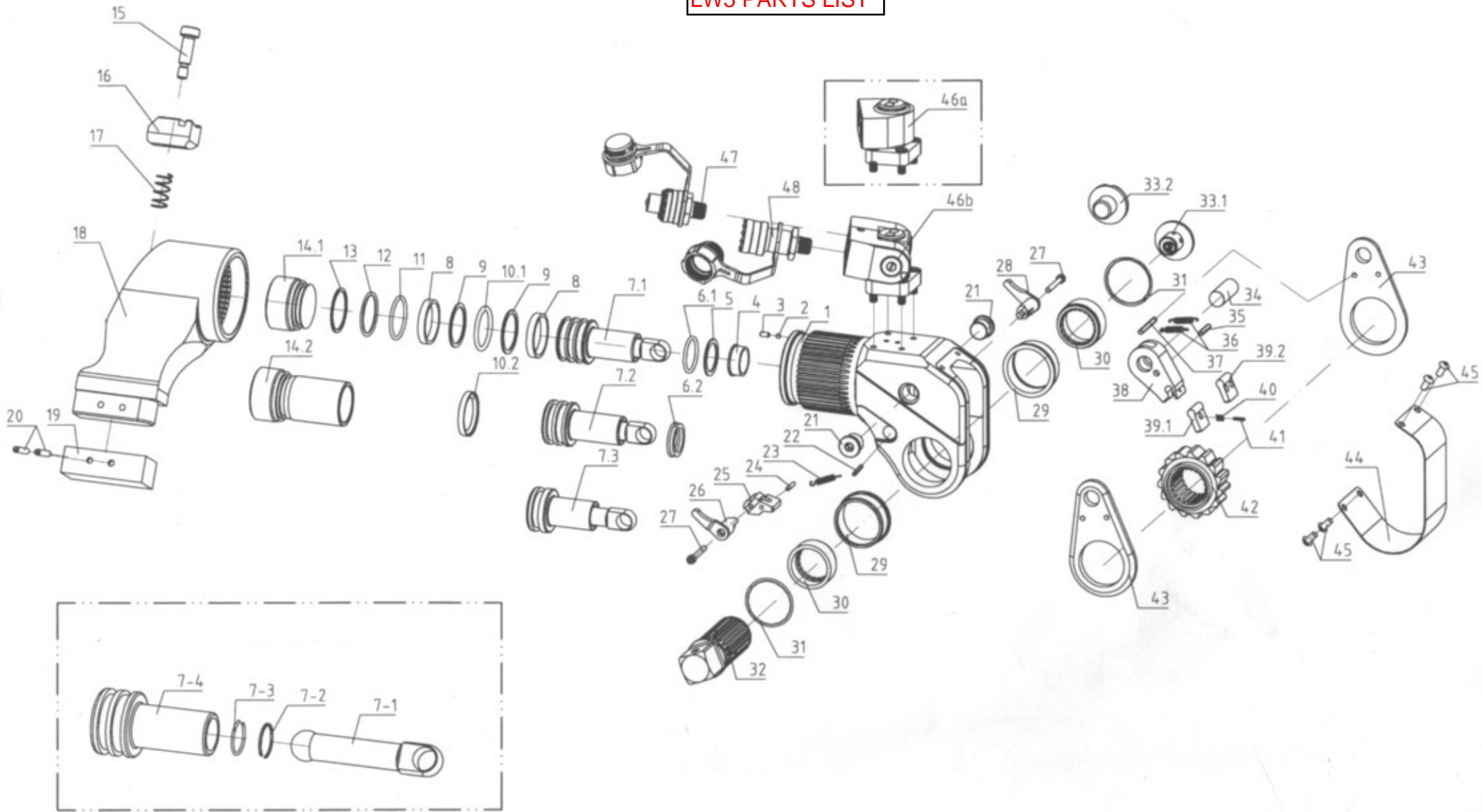


LW5 PARTS LIST



LW5 PARTS LIST

| ITEM | BOLTTECH PART NUMBER | NAME | ASSEMBLY | QTY. |
|------|----------------------|--------------------------|-----------------------|------|
| 1 | LW5-01 | Body | HOUSING ASSEMBLY | 1 |
| 3 | M4*8GB77/GB80 | Screw | | 1 |
| 6.2 | 28*35.5*5PU UN28 | U-Ring | | 1 |
| 7.3 | LW5-02 | Piston Rod Assembly | PISTON ROD ASSEMBLY | 1 |
| 7-1 | 5BTUS.02-02 | Piston connected rod | | 1 |
| 7-2 | 5BTUS.02-03 | retaining clip | | 1 |
| 7-3 | 5BTUS.02-04 | steel retaining ring | | 1 |
| 7-4 | 5BTUS.02A-01 | piston rod | | 1 |
| 8 | 5BTUS.02A-05 | wearable ring6.1*2.5*138 | | 1 |
| 9 | 45*38.8*1.4 | Retaining Ring | | 1 |
| 10.1 | 3.5*38.7 N90/P39 | O-Ring | | 1 |
| 12 | N70/AS568-129 | O-Ring | | 1 |
| 13 | 45*10.5*1.2 | Retaining Ring | | 1 |
| 14.1 | LW5-03 | End Cap | | 1 |
| 15 | M10*25 ISO7379 | Screw | REACTION ARM ASSEMBLY | 1 |
| 16 | LW5-04 | Reaction Arm fixer | | 1 |
| 17 | 3BTUS.03.04 | Compressed Spring | | 1 |
| 18 | LW5-05 | Reaction Arm | | 1 |
| 19 | LW5-06 | Reaction Arm Cover | | 1 |
| 20 | M5*35GB879 | Pin | | 1 |
| 21 | LW5-07 | Screw 2 | | |
| 22 | M4*24GB879 | Pin | | 1 |
| 23 | 3MXTA-21 | Tension Spring | | 1 |
| 24 | M4*24GB879 | Pin | | 1 |
| 25 | LW5-08 | Reaction Pawl | | 1 |
| 26 | LW5-09 | Button Lever(Left) | | 1 |
| 27 | M4*30GB70.1 | Screw 2 | | |
| 28 | LW5-10 | Button Lever(Rigth) | | 1 |
| 29 | LW5-11 | Drive Bushing | | 2 |
| 30 | LW5-12 | Drive Sleeve Spline | | 2 |
| 31 | DNH-48 | Circlip | | 2 |
| 32 | LW5-13 | Square Drive | | 1 |
| 33.1 | LW5-14 | Drive Retainer | | 1 |
| 34 | LW5-15 | Rod End Pin | | 1 |
| 35 | M4*24GB879 | Pin | PAWL ASSEMBLY | 1 |
| 36 | 5MXTA-20 | Tension Spring | | 2 |
| 37 | M4*40GB879 | Pin | | 1 |
| 38 | LW5-16 | Drive Pawl Primary | | 1 |
| 39.2 | LW5-17 | Drive Pawl Secondary | | 1 |
| 40 | 5MXTA-22 | Compressed Spring | | 2 |
| 42 | LW5-18 | Ratchet Spline | | 1 |
| 43 | LW5-19 | Drive Plate | | 2 |
| 44 | LW5-20 | Shroud | | 1 |
| 45 | M5*8GB70.2 | Screw | | 4 |
| 46a | JX3 | Swivel Assembly | | 1 |